



INSTALLATION AND WARRANTY

SPEC Living
Multi Family Flooring Experts

PREMIUM GLUE DOWN/LOOSE LAY VINYL PLANK INSTALLATION INSTRUCTIONS

SUITABLE SURFACES: Any solid, hard, flat surface. Dry, clean, well-cured concrete. All surfaces must be dry, cleaned and free of substances that may prevent adhesive bonding. Wood plank floors must be covered with a 6.35mm (0.25") minimum or thicker APA rated underlay panels. All wood floors must be suspended at least 457.2mm (18") above the ground for ventilation.

UNSUITABLE SURFACES: Rough, uneven surfaces including particleboard, chipboard, OSB, pressure treated or coated plywood, carpet and underlay. Rough, heavily textured and/or uneven surfaces may telegraph through the vinyl and distort the finished surface. Do not install this product in areas that are exposed to long term direct sunlight, such as sunrooms or solariums.

WARNING: DO NOT REMOVE OLD RESILIENT FLOORING. THESE PRODUCTS MAY CONTAIN EITHER ASBESTOS FIBERS OR CRYSTALLINE SILICA, WHICH CAN BE HARMFUL TO YOUR HEALTH.

RADIANT HEATED FLOORS: Can be installed using a permanent glue/adhesive over hydronic, radiant, heated floors, or electric, radiant, heated floors that use embedded cables under the subfloor. Follow the manufacturers instructions when installing radiant heat floors, including putting self-leveling compound or thinset mortar above and below the heating cables. The system must be switched off for 48 hours before, during and for 48 hours after insulation of the vinyl flooring, then gradually increased by about 2°C or 36°F per hour until the desired temperature is reached. The temperature must be maintained between 18 to 29°C or 65 to 85°F at all times. A full spread adhesive for vinyl flooring must be used if it's installing over radiant heat.

PREPARATION: The vinyl planks should be allowed to acclimatize the room temperature (18-29 2°C or 65 to 85°F) or 48 hours prior to installation. Carefully check planks for any defects before installation. Check that all item numbers are the same and that you have purchased sufficient material to complete the job.

New concrete floors need to dry out for at least 60 days prior to installation. All concrete slabs must be checked for moisture before installing product. Moisture emissions from the subfloor cannot exceed 3.6 KG per 93 m² (8 lbs per 1000 ft²) per 24 hours, as measured with the calcium chloride test in accordance with the latest addition of the ASTM F1869. Internal relative humidity must be tested in accordance with the latest edition of the ASTM F2170. Humidity should not exceed 85%. Be sure to also observe the adhesive manufacturers requirements. On or below grade concrete slabs must have an effective vapor barrier installed directly under the slabs. Massive moisture in the subfloor, could promote, mold, mildew, and other moisture related issues, which can contribute to an unhealthy indoor environment.

All nail heads must be driven down below the surface. Securely nail all loose boards. Scrape, plane, or fill uneven boards, holes or cracks, using floor leveling compound. Make sure the floor is smooth, clean, and free of wax, grease, oil, or dust, and sealed as necessary before laying planks. Remove any traces of glue or residue from the previous flooring. Sub floors must be flat within 3mm over 1.82m (1/8" over 6').

For ceramic, mosaic, terrazzo, and quarry tile floors, fill grout lines with a proper leveling compound.

TOOLS AND SUPPLIES: Pressure sensitive adhesive or double sided tape specially formulated for vinyl, notched trowel (as recommended by the adhesive manufacturer), utility knife, pencil, tape, measure, ruler and safety goggles.

**Pressure sensitive spray adhesive may be used for grid or loose lay installation.*

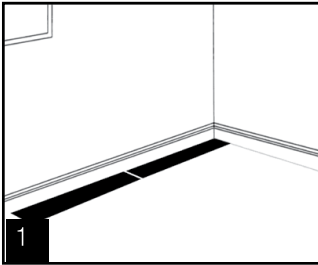


INSTALLATION AND WARRANTY

SPEC Living
Multi Family Flooring Experts

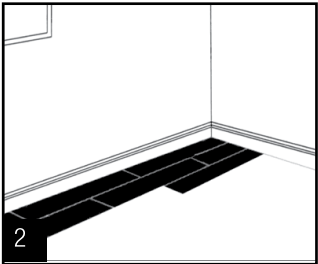
GLUE DOWN INSTALLATION

PLANNING YOUR FLOOR: Begin in the corner of the longest wall. Prior to applying the adhesive, lay a complete row of planks to determine the length of the final plank. If the last plank is shorter than 300 mm. (11.8") , then adjust the starting point accordingly; this is necessary in order to achieve the correct, staggered effect. **Diagram 1**



LAYING YOUR FLOOR: Apply a high tack flooring adhesive as recommended by your flooring retailer at the corner of the longest wall, using a 1.6mm (1/16") square notch trowel, or as recommended by the adhesive manufacturer. Avoid spreading more adhesive than needed, as the adhesive will lose its ability to fully stick to the back of the planks.

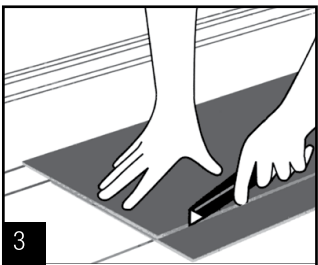
Position the first plank at your starting point. Check that this position is correct and apply firm, all over pressure to achieve contact. Lay all planks, ensuring a close fit, but do not force together. Ensure that the cut edge always faces the wall. We recommend that you stagger the joints in minimum of 300mm (11.8") apart, but you may stagger them as little as 203.2mm (8") apart. **Diagram 2.**



To fit air vents, door frames, etc. make a cardboard pattern as a guide and use this to draw an outline on the plank. Cut to shape and check that it fits. It should fit snugly and should not be forced into place.

Continue installing planks in the same way as described above.

FINAL CUTTING LAST ROW: When you reach the last row, you may find that the gap is less than one full plank wide. To ensure accurate cutting of the final row, lay the plank to be cut exactly over the last full plank, lay another full plank against the wall, and mark the cutting line with the planks overlay. Before applying adhesive, check that the cut plank fits correctly. The plank should not be forced into place. **Diagram 3.**





INSTALLATION AND WARRANTY

SPEC Living
Multi Family Flooring Experts

STAIRS

For insulation on stairs and landings, use a permanent adhesive (recommended by your flooring, dealer or manufacturer). Stair nosings should be metal or rubber.

CARE AND MAINTENANCE

Avoid exposure to direct sunlight for prolonged periods of time. Use drapes or blinds to minimize direct sunlight during peak sunlight hours. Surface temperature should never exceed 29° C (84° F).

When you have finished laying your floor, clean up any remaining or spilled adhesive with a damp cloth. Allow 5 to 7 days before cleaning the floor To allow the perimeter planks to adhere to the sub floor.

If an edge or corner of the flooring happens to lift slightly in specific areas, use double-sided floor tape to adhere the floor flushed to the subfloor.

Sweep regularly to remove surface grit and dust. Use a damp cloth or mop to clean up any dirt and footprints. Avoid using excessive amounts of moisture, as this may cause bond failure for the adhesive. All spills should be cleaned up immediately. CAUTION: planks are slippery when wet.

Never use wax, polish, abrasive, cleaners, or scouring agents as they may dull or distort the finish.

High heels can damage floors.

Do not allow pets with unclipped nails to scratch or damage the floor.

Use protective pads under furniture.

Use doormats at entrance ways to protect the floor from discoloring. Avoid using rubber-backed rugs, as they may stain or discolor the vinyl flooring. If you have an asphalt driveway, use a heavy duty doormat at your main door, as chemicals and asphalt can cause vinyl flooring to yellow.

It's a good idea to save a few planks in case of accidental damage. Planks can be replaced or repaired by a flooring professional.

Installation of flooring should begin after the job site has been cleaned and cleared of other trades.

CAUTION: Some types of nails, such as common, steel nails, cement coated, or some resin coated nails, may cause a discoloration of the vinyl floor covering. Use only non-staining fasteners with underlayment panels. The procedure of gluing and screwing underlayment panels is not recommended. Solvent-based construction adhesives are known to stain vinyl floor coverings. All responsibility for discoloration problems caused by fastener staining, or the use of construction adhesive rest with the underlayment installer/consumer.



INSTALLATION AND WARRANTY

SPEC Living
Multi Family Flooring Experts

WARRANTY

This guarantee is for replacement or refund of the vinyl plank flooring only, not labor (including the cost of labor for installation of the replacement floor) or cost incurred with loss of time, incidental expenses or any other damage. It does not cover damage from improper installation or maintenance (including side or end gapping), burns, tears, indentations, stains or reduction in gloss level due to normal use and/or exterior applications. Gapping, shrinkage, squeaks, fading or structural subfloor related issues are not covered under this warranty. **Temperature variations - excessive heat (29° C / 84° F) or below freezing (-4° C / 25° F and below) - may cause expansion or contraction of the product**

LIFETIME LIMITED RESIDENTIAL WARRANTY

Our lifetime limited residential warranty for vinyl plank means that, for the duration of your lifetime in your home, from the date of purchase, your floor will be free from manufacturing defects and will not wear through or permanently stain from common household stains when installed and maintained according to instructions supplied with each carton. * Lifetime means 30 years.

10 YEAR LIMITED COMMERCIAL WARRANTY

Our 10 year limited commercial warranty for vinyl plank means that for 10 years, from the date of purchase, your floor will be free from manufacturing defects and will not wear through when installed and maintained according to instructions supplied with improper installation or workmanship should be directed to the contractor who installed the floor.

CLAIMS

This guarantee applies only to the original purchaser and proof of purchases required for all claims. Claims for wear must show a minimum dime size area. This guarantee is prorated based on the amount of time the floor has been installed. If you wish to file a claim under warranty, contact the authorized dealer where the flooring was purchased.